



MARCA

MODELO



MONTANA 314-V20

Categoría producto: MOTOSIERRA

Grupo producto: GASOLINA

Cilindrada: 37,2 c.c.

Versión: 314V20

Publicación: 04-21

Cód.: 40G-0149

FIG 1

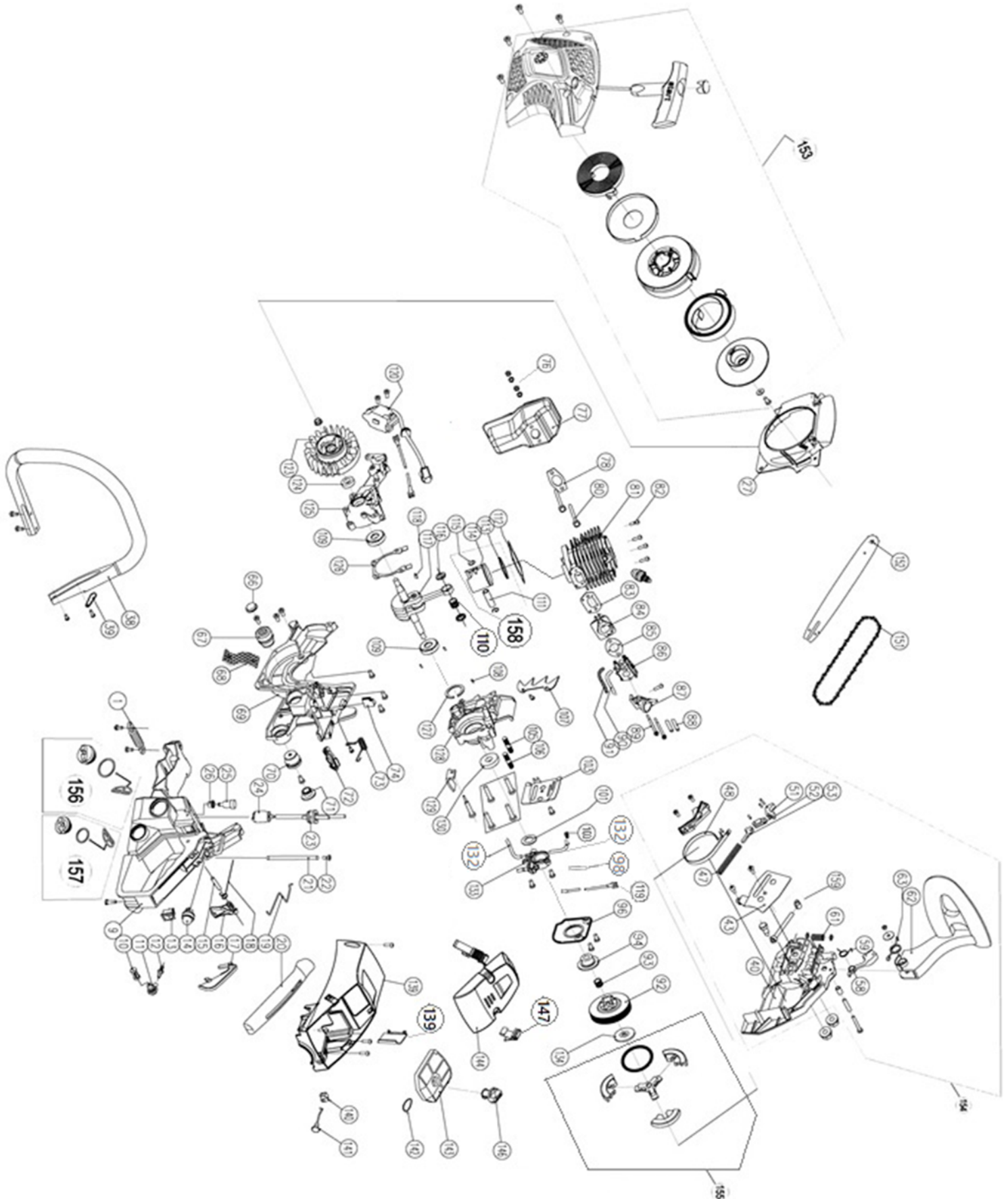


FIG. 1 MONTANA 314-V20

Nº	Nº Ref.	Descripción	English name	Uds.
1	CS4100-3-1	MUELLE	SPRING-CRANK CASE	1
9	CS4100-3-9	DEPOSITO COMPLETO	FUEL TANK	1
10	CS4100-3-10	FILTRO	FILTER VENT	1
11	CS4100-3-11	FILTRO ACEITE	FILTER OIL	1
12	CS4100-3-12	CONECTOR	PIPE-JOINT	1
13	CS4100-3-13	INTERRUPTOR SEGURIDAD	ON-OFF SWITCH	1
14	CS4100-3-14	CEBADOR	OIL PRIMER	1
15	CS4100-3-15	PASADOR	ROUN PIN 6*28	1
16	CS4100-3-16	GATILLO	TIGGER	1
17	CS4100-3-17	TAPA GATILLO	LEVER-SAFETY TRIGGER	1
18	CS4100-3-18	MUELLE	SPING-TRIGGER	1
19	CS4100-3-19	VARILLA	ROD THROTTLE	1
20	CS4100-3-20	TAPA ASIDERO	BACK HANDLE COVER	1
21	CS4100-3-21	TUBO AIRE	VENTILATE FUEL PIPE	1
22	CS4100-3-22	TORNILLO	HEXAGONAL SCREW ST4.2*13	1
23	MG3800-70	PASATUBOS	SUPPORT-HOSE OIL ASSY	1
24	CS4100-3-24	FILTRO	FUEL FILTER	1
25	CS4100-3-25	VALVULA	BALANCER	1
26	CS4100-3-26	SOPORTE VALVULA	SUPPORT-BALANCER	1
27	CS4100-3-27	TAPA VENTILADOR	BAFFLE-FAN	1
38	CS4100-3-38	ASIDERO FRONTAL	HANDLE	1
39	CS4100-3-39	TAPA MUELLE	COVER-SPING	1
40	CS4100-3-40	TAPA CADENA	BRAKE HOUSING	1
43	CS4100-3-43	CHAPA ESPADA	COVER-CHAIN ADJUSTING	1
47	CS4100-3-47	MUELLE RETENEDOR	SPRING-BRAKE LEVER	1
48	CS4100-3-48	FLEJE FRENO	BAND-BRAKE	1
51	CS4100-3-51	LEVA PRINCIPAL	LEVERAGE-BRAKE (MAIN)	1
52	CS4100-3-52	FIJACION LEVA	LEVERAGE-BRAKE (ASSISTANT)	1
53	CS4100-3-53	PLACA	PLATE-BRAKE	1
58	CS4100-3-58	LEVA FRENO	LEVERAGE-BRAKE	1
59	CS4100-3-59	MUELLE	SPRING-LEVERAGE	1
61	CS4100-3-61	MUELLE FIJADOR	COMPRESS SPRING-LEVERAGE	2
62	CS4100-3-62	PALANCA FRENO	LEVERAGE	1
63	CS4100-3-63	MUELLE PALANCA	COMPRESS SPRING-LEVERAGE	1
66	CS4100-3-66	TAPON	PLUG-PAD(SMALL)	1

FIG. 1 MONTANA 314-V20

Nº	Nº Ref.	Descripción	English name	Uds.
67	CS4100-3-67	AMORIGUADOR	LONG PAD-RUBBER CUSHIONING	1
68	CS4100-3-68	RED	NET BAND	1
69	CS4100-3-69	CARTER	CRANK CASE	1
70	CS4100-3-70	AMORTIGUADOR	SHORT PAD-RUBBER CUSHIONING	1
71	CS4100-3-71	TAPON	PLUG-PAD(BIG)	1
72	CS4100-3-72	JUNTA	GASKET-RUBBER	1
73	CS4100-3-73	MUELLE ASIDERO	SPRING-HANDLE	1
74	CS4100-3-74	FIJADOR CHASIS	STOP PLATE-CRANKCASE	1
76	CS4100-3-76	TUERCA	HEX NUT M5	2
77	CS4100-3-77	ESCAPE	MUFFLER	1
78	CS4100-3-78	JUNTA ESCAPE	MUFFLER GASKET	1
80	MG3800-80	TORNILLO SUJECION	FIXER SCREW	1
81	CS4100-3-81	CILINDRO	CILINDER	1
83	CS4100-3-83	JUNTA ADMISION	GASKET-INTAKE	1
84	CS4100-3-84	CUELLO ADMISION	AIR INTAKE	1
85	CS4100-3-85	JUNTA CARBURADOR	CARBURETOR GAKSET	1
86	CS4100-3-86	CARBURADOR	CARBURETOR	1
87	CS4100-3-87	SOPORTE FILTRO	GROMMET-INNER	1
88	CS4100-3-88	TORNILLO	INLET ELBOW	1
89	CS4100-3-89	TORNILLO M4X70	CARBURETOR SCREW PIPE BRANCH	2
90	CS4100-3-90	TUBO ENTRADA	OIL PRIMER INLET PIPE	2
91	CS4100-3-91	TUBO SALIDA	OIL-OUT SPRING	1
92	CS4100-3-92	CAMPANA EMBRAGUE	CLUTCH COVER	1
93	CS4100-3-93	COJINETE	BEARING NEEDLE K101313	1
94	CS4100-3-94	SINFIN	WORM GEAR	1
96	CS4100-3-96	TAPA BOMBA	COVER-OIL PUMP	1
98	CS4100-3-98	TUBO AISLANTE	SAVE THERMAL TUBE	1
100	CS4100-3-100	SALIDA ACEITE	OIL VALVE WENT	1
101	CS4100-3-101	JUNTA	WORM GEAR WASHER 10.1*18.2*1	1
103	CS4100-3-103	TAPA	OIL OUTLET PLATE	1
105	CS4100-3-105	PASADOR LARGO	STUD DOUBLE END BOLT(LONGER)	1
106	CS4100-3-106	PASADOR CORTO	STUD DOUBLE END BOLT(SHORTER)	1
107	CS4100-3-107	GARRA	TOOTH SHAPE PLATE	1
108	CS4100-3-108	PASADOR	BOX PIN 3*8	1
109	CS4100-3-109	RODAMIENTO BANCADA	BEARING BALL	2
110	CS4100-3-110	COJINETE BULON	BEARING-NEEDLE	1
111	CS4100-3-111	BULON PISTON	PISTON PIN	1

FIG. 1 MONTANA 314-V20

Nº	Nº Ref.	Descripción	English name	Uds.
112	CS4100-3-112	JUNTA CILINDRO	BEARDING NEEDLE K101411	1
113	CS4100-3-113	SEGMENTO	PISTON PIN	1
114	CS4100-3-114	PISTON	CYLINDER GASKET	1
115	CS4100-3-115	FRENILLO	PISTON RING	2
116	CS4100-3-116	COJINETE	PLATE-BEARING	2
117	CS4100-3-117	CIGÜEÑAL + BIELA	CRANK SHAFT ASSY	1
118	CS4100-3-118	CHAVETA	BEARING RETAINER	1
119	CS4100-3-119	CABLE	CABLE	1
120	CS4100-3-120	ELECTRONICO	IGNITION COIL	1
123	CS4100-3-123	VOLANTE MAGNETICO	FLYWHEEL	1
124	CS4100-3-124	RETEN	SEAL OIL	1
125	CS4100-3-125	CARTER IZQUIERDO	LEFT CRANK CASE	1
126	CS4100-3-126	JUNTA	GASKET-MOULD ASSEMBLING	1
127	CS4100-3-127	JUNTA ANILLO	HOLE SNAP RING	1
128	CS4100-3-128	CARTER DERECHO	RIGHT CRANKCASE	1
129	CS4100-3-129	SOPORTE	CHAIN CARCHER	1
130	CS4100-3-130	RETEN 12X32X5.5	OIL SEAL 12*32*5.5	1
132	CS4100-3-132	TUBO ACEITE	HOSE-OIL	2
133	CS4100-3-133	BOMBA ACEITE	OIL PUMP	1
134	CS4100-3-134	ARANDELA	WASHER-DRUM CLUTCH	1
139	CS4100-3-139	TAPA	CONVERTER PLATE	1
140	CS4100-3-140	SOPORTE TIRADOR	KNOB BUSHING	1
141	CS4100-3-141	TIRADOR AIRE	CHOKE KNOB	1
142	CS4100-3-142	ARANDELA FILTRO	AIR FILTER WASHER	1
143	CS4100-3-143	FILTRO AIRE	FILTER-AIR	1
144	CS4100-3-144	TAPA FILTRO	COVER-AIR FILTER	1
146	CS4100-3-146	TAPON TUERCA	KNOB-AIR FILTER	1
147	CS4100-3-147	FIJACION TAPA FILTRO	SNAP JOINT	1
151	7103805053	CADENA MOTOSIERRA 53E3/8BP.050	SAW CHAIN 53E 3/8BP .050	1
152	CS105601400	ESPADA 14" - 35 CM	GUIDE BAR 14" - 35 CM	1
153	CS4100-3-153	ARRANCADOR COMPLETO	START ASSY	1
154	CS4100-3-154	TAPA CADENA COMPLETA	BRAKE ASSY	1
155	CS4100-3-155	EMBRAGUE COMPLETO	CLUTCH ASSY	1
156	CS4100-3-156	TAPON GASOLINA	FUEL CAP ASSY	1
157	CS4100-3-157	TAPON ACEITE	OIL CAP ASSY	1
158	CS4100-3-158	PISTON COMPLETO	PISTON ASSY	1
159	CS4100-3-159	KIT TENSOR	TENSOR KIT	1