



MARCA



MODELO

**MONTANA 110**

Categoría producto: MOTOSIERRA  
Grupo producto: GASOLINA  
Cilindrada: 25,4 cc.

Versión: 1.0  
Fecha máquina: 2015  
Publicación: 09-17

FIGURA 1

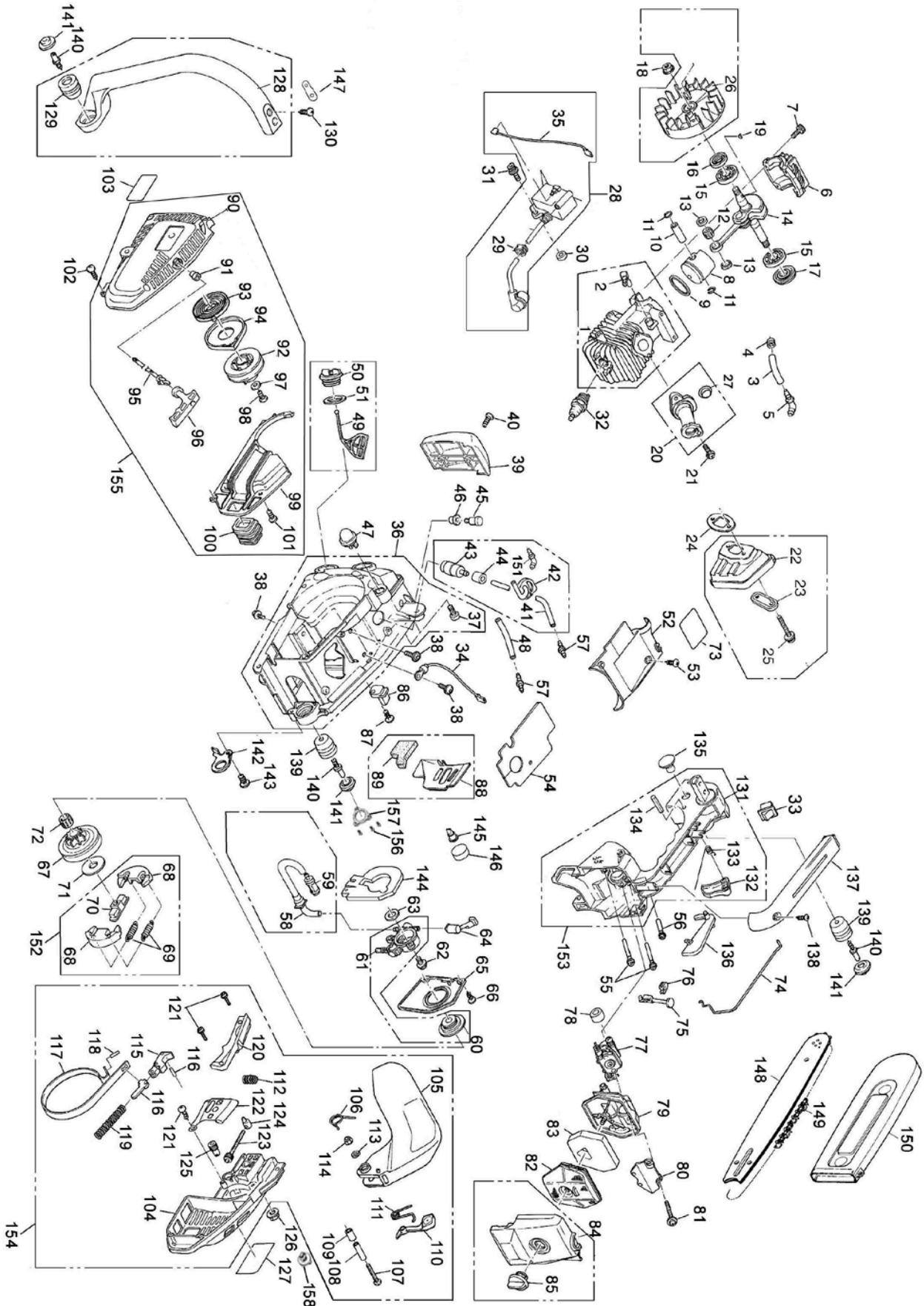


FIG. 1 MONTANA 110

| Nº | Nº Ref.         | Descripción        | English name                  | Uds. |
|----|-----------------|--------------------|-------------------------------|------|
| 1  | 78MONTANA110-1  | CILINDRO           | CYLINDER                      | 1    |
| 2  | 78MONTANA110-2  | CONECTOR TUBO      | CONNECTOR                     | 1    |
| 3  | 78MONTANA110-3  | TUBO               | TUBE                          | 1    |
| 4  | 78MONTANA110-4  | CLIP TUBO          | TUBE CLIP                     | 1    |
| 5  | 78MONTANA110-5  | CONECTOR TUBO      | CONNECTOR                     | 1    |
| 6  | 78MONTANA110-6  | TAPA CARTER        | CRANKCASE COVER               | 1    |
| 7  | 78MONTANA110-7  | TORNILLO M5X20     | SCREW M5X20                   | 1    |
| 8  | 78MONTANA110-8  | PISTON             | PISTON                        | 1    |
| 9  | 78MONTANA110-9  | SEGMENTO           | O-RING                        | 1    |
| 10 | 78MONTANA110-10 | BULON              | PISTON PIN                    | 1    |
| 11 | 78MONTANA110-11 | FRENILLO BULON     | PISTON PIN RETAINER           | 2    |
| 12 | 78MONTANA110-12 | COJINETE BULON     | BEARING BALL                  | 1    |
| 13 | 78MONTANA110-13 | SEPARADOR BIELA    | SPACER                        | 2    |
| 14 | 78MONTANA110-14 | CIGUEÑAL+BIELA     | CRANKSHAFT AND CONNECTING ROD | 1    |
| 15 | 78MONTANA110-15 | COJINETE BANCADA   | BEARING                       | 2    |
| 16 | 78MONTANA110-16 | RETEN 12X22X4.5    | OIL SEAL 12X22X4.5            | 1    |
| 17 | 78MONTANA110-17 | RETEN 12X28X6      | OIL SEAL 12X28X6              | 1    |
| 18 | 78MONTANA110-18 | TUERCA VOLANTE     | NUT                           | 1    |
| 19 | 78MONTANA110-19 | CHAVETA            | KEY                           | 1    |
| 20 | 78MONTANA110-20 | CUELLO ADMISION    | BOOT INTAKE                   | 1    |
| 21 | 78MONTANA110-21 | TORNILLO M4X14     | SCREW M4X14                   | 1    |
| 22 | 78MONTANA110-22 | SILENCIADOR        | MUFFLER                       | 1    |
| 23 | 78MONTANA110-23 | FIJADOR ESCAPE     | MUFFLER FIXER                 | 1    |
| 24 | 78MONTANA110-24 | JUNTA ESCAPE       | MUFFLER GASKET                | 1    |
| 25 | 78MONTANA110-25 | TORNILLO ESCAPE    | SCREW                         | 1    |
| 26 | 78MONTANA110-26 | VOLANTE MAGNETICO  | FLYWHEEL                      | 1    |
| 27 | 78MONTANA110-27 | CASQUILLO ADMISION | SLEEVE                        | 1    |
| 28 | 78MONTANA110-28 | ELECTRONICO        | IGNITION                      | 1    |
| 29 | 78MONTANA110-29 | PASA CABLE         | WIRE CLIP                     | 1    |
| 30 | 78MONTANA110-30 | SEPARADOR          | SPACER                        | 1    |
| 31 | 78MONTANA110-31 | TORNILLO BOBINA    | SCREW                         | 1    |
| 32 | 7199240010      | BUJIA 2T           | SPARK PLUG                    | 1    |
| 33 | 78MONTANA110-33 | INTERRUPTOR        | SWITCH                        | 1    |
| 34 | 78MONTANA110-34 | CABLE ELECTRICO    | ELECTRIC WIRE                 | 1    |
| 35 | 78MONTANA110-35 | CABLE ELECTRICO    | ELECTRIC WIRE                 | 1    |
| 36 | 78MONTANA110-36 | DEPOSITOS + CHASIS | TANK + FRAME                  | 1    |
| 37 | 78MONTANA110-37 | TORNILLO           | SCREW                         | 1    |
| 38 | 78MONTANA110-38 | TORNILLO           | SCREW                         | 3    |
| 39 | 78MONTANA110-39 | CARCASA DELANTERA  | FRONT CASING                  | 1    |
| 40 | 78MONTANA110-40 | TORNILLO           | SCREW                         | 1    |
| 41 | 78MONTANA110-41 | TUBO GASOLINA      | FUEL PIPE                     | 1    |

| FIG. 1 MONTANA 110 |                 |                          |                  |      |
|--------------------|-----------------|--------------------------|------------------|------|
| Nº                 | Nº Ref.         | Descripción              | English name     | Uds. |
| 42                 | 78MONTANA110-42 | PASA TUBOS               | TUBE CLAMP       | 1    |
| 43                 | 78MONTANA110-43 | FILTRO GASOLINA          | FUEL FILTER      | 1    |
| 44                 | 78MONTANA110-44 | FUNDA FILTRO             | FILTER COVER     | 1    |
| 45                 | 78MONTANA110-45 | VALVULA DEPOSITO         | TANK VALVE       | 1    |
| 46                 | 78MONTANA110-46 | SOPORTE VALVULA          | SUPPORT          | 1    |
| 47                 | 78MONTANA110-47 | CEBADOR                  | PRIMER           | 1    |
| 48                 | 78MONTANA110-48 | TUBO                     | TUBE             | 1    |
| 49                 | 78MONTANA110-49 | FIJADOR TAPON            | PLUG FIXER       | 1    |
| 50                 | 78MONTANA110-50 | TAPON                    | PLUG             | 1    |
| 51                 | 78MONTANA110-51 | JUNTA TAPON              | GASKET           | 1    |
| 52                 | 78MONTANA110-52 | PLACA TAPA               | PLATE            | 1    |
| 53                 | 78MONTANA110-53 | TORNILLO                 | SCREW            | 1    |
| 54                 | 78MONTANA110-54 | JUNTA SUPERIOR           | TOP GASKET       | 1    |
| 55                 | 78MONTANA110-55 | TUBO                     | TUBE             | 2    |
| 56                 | 78MONTANA110-56 | TUBO                     | TUBE             | 1    |
| 57                 | 78MONTANA110-57 | CONECTOR TUBO            | CONNECTOR        | 2    |
| 58                 | 78MONTANA110-58 | TUBO ACEITE              | OIL PIPE         | 1    |
| 59                 | 78MONTANA110-59 | FILTRO ACEITE            | OIL FILTER       | 1    |
| 60                 | 78MONTANA110-60 | SINFIN BOMBA             | WORM PUMP        | 1    |
| 61                 | 78MONTANA110-61 | BOMBA ACEITE             | OIL PUMP         | 1    |
| 62                 | 78MONTANA110-62 | TORNILLO                 | SCREW            | 1    |
| 63                 | 78MONTANA110-63 | ARANDELA BOMBA           | WASHER           | 1    |
| 64                 | 78MONTANA110-64 | CONECTOR ACEITE          | OIL CONNECTOR    | 1    |
| 65                 | 78MONTANA110-65 | TAPA BOMBA               | PUMP COVER       | 1    |
| 66                 | 78MONTANA110-66 | TORNILLO                 | SCREW            | 1    |
| 67                 | 78MONTANA110-67 | PIÑON ARRASTRE           | DRIVING PINION   | 1    |
| 68                 | 78MONTANA110-68 | ZAPATA EMBRAGUE          | CLUTCH PAD       | 1    |
| 69                 | 78MONTANA110-69 | MUELLE EMBRAGUE          | SPRING           | 2    |
| 70                 | 78MONTANA110-70 | CRUCETA EMBRAGUE         | CLUTCH CROSSHEAD | 1    |
| 71                 | 78MONTANA110-71 | ARANDELA EMBRAGUE        | WASHER           | 1    |
| 72                 | 78MONTANA110-72 | COJINETE PIÑON           | BEARING          | 1    |
| 73                 | 78MONTANA110-73 | ETIQUETA (NO DISPONIBLE) | LABEL            | 1    |
| 74                 | 78MONTANA110-74 | VARILLA ACELERADOR       | THROTTLE ROD     | 1    |
| 75                 | 78MONTANA110-75 | TIRADOR AIRE             | AIR PULLER       | 1    |
| 76                 | 78MONTANA110-76 | SOPORTE TIRADOR          | SUPPORT          | 1    |
| 77                 | 78MONTANA110-77 | CARBURADOR               | CARBURETOR       | 1    |
| 78                 | 78MONTANA110-78 | CASQUILLO ESPONJA        | SLEEVE           | 1    |
| 79                 | 78MONTANA110-79 | SOPORTE FILTRO           | FILTER SUPPORT   | 1    |
| 80                 | 78MONTANA110-80 | PLACA                    | PLATE            | 1    |
| 81                 | 78MONTANA110-81 | TORNILLO                 | SCREW            | 1    |
| 82                 | 78MONTANA110-82 | FILTRO AIRE-B            | AIR FILTER-B     | 1    |

FIG. 1 MONTANA 110

| Nº  | Nº Ref.          | Descripción              | English name   | Uds. |
|-----|------------------|--------------------------|----------------|------|
| 83  | 78MONTANA110-83  | ESPONJA FILTRO           | FILTER SPONGE  | 1    |
| 84  | 78MONTANA110-84  | TAPA FILTRO              | FILTER COVER   | 1    |
| 85  | 78MONTANA110-85  | PALOMILLA FILTRO         | NUT            | 1    |
| 86  | 78MONTANA110-86  | BLOQUEADOR CADENA        | LOCK CHAIN     | 1    |
| 87  | 78MONTANA110-87  | TORNILLO                 | SCREW          | 1    |
| 88  | 78MONTANA110-88  | PLACA ESPADA             | BLADE PLATE    | 1    |
| 89  | 78MONTANA110-89  | FIELTRO                  | FELT           | 1    |
| 90  | 78MONTANA110-90  | CARCASA ARRANCADOR       | STARTER CASING | 1    |
| 91  | 78MONTANA110-91  | CASQUILLO CORDON         | SLEEVE         | 1    |
| 92  | 78MONTANA110-92  | POLEA CORDON             | PULLEY         | 1    |
| 93  | 78MONTANA110-93  | MUELLE ARRANQUE          | STARTER SPRING | 1    |
| 94  | 78MONTANA110-94  | TAPA MUELLE              | SPRING COVER   | 1    |
| 95  | 78MONTANA110-95  | CORDON                   | ROPE           | 1    |
| 96  | 78MONTANA110-96  | PUÑO ARRANQUE            | HANDGRIP       | 1    |
| 97  | 78MONTANA110-97  | ARANDELA POLEA           | WASHER         | 1    |
| 98  | 78MONTANA110-98  | TORNILLO POLEA           | SCREW          | 1    |
| 99  | 78MONTANA110-99  | DEFLECTOR                | DEFLECTOR      | 1    |
| 100 | 78MONTANA110-100 | SOPORTE                  | SUPPORT        | 1    |
| 101 | 78MONTANA110-101 | TORNILLO                 | SCREW          | 1    |
| 102 | 78MONTANA110-102 | TORNILLO                 | SCREW          | 1    |
| 103 | 78MONTANA110-103 | ETIQUETA (NO DISPONIBLE) | LABEL          | 1    |
| 104 | 78MONTANA110-104 | TAPA CADENA              | COVER          | 1    |
| 105 | 78MONTANA110-105 | PALANCA FRENO            | BRAKE LEVER    | 1    |
| 106 | 78MONTANA110-106 | MUELLE                   | SPRING         | 1    |
| 107 | 78MONTANA110-107 | TORNILLO                 | SCREW          | 1    |
| 108 | 78MONTANA110-108 | CASQUILLO                | SLEEVE         | 1    |
| 109 | 78MONTANA110-109 | CASQUILLO                | SLEEVE         | 1    |
| 110 | 78MONTANA110-110 | TRINQUETE                | RATCHET        | 1    |
| 111 | 78MONTANA110-111 | MUELLE                   | SPRING         | 1    |
| 112 | 78MONTANA110-112 | MUELLE                   | SPRING         | 1    |
| 113 | 78MONTANA110-113 | ARANDELA                 | WASHER         | 1    |
| 114 | 78MONTANA110-114 | TUERCA M5                | NUT M5         | 1    |
| 115 | 78MONTANA110-115 | MECANISMO FRENO          | BRAKE BUTTON   | 1    |
| 116 | 78MONTANA110-116 | PASADOR                  | PIN            | 1    |
| 117 | 78MONTANA110-117 | FLEJE FRENO              | STRAP          | 1    |
| 118 | 78MONTANA110-118 | PASADOR FLEJE            | PIN            | 1    |
| 119 | 78MONTANA110-119 | MUELLE                   | SPRING         | 1    |
| 120 | 78MONTANA110-120 | TAPA MECANISMO           | COVER          | 1    |
| 121 | 78MONTANA110-121 | TORNILLO                 | SCREW          | 2    |
| 122 | 78MONTANA110-122 | PLACA ESPADA             | BLADE PLATE    | 1    |



FIG. 1 MONTANA 110

| Nº  | Nº Ref.          | Descripción               | English name      | Uds. |
|-----|------------------|---------------------------|-------------------|------|
| 123 | 78MONTANA110-123 | EJE TENSOR                | SHAFT             | 1    |
| 124 | 78MONTANA110-124 | PIVOTE TENSOR             | TENSIONER PIN     | 1    |
| 125 | 78MONTANA110-125 | PIÑON TENSOR              | PINION            | 1    |
| 126 | 78MONTANA110-126 | TUERCA ESPADA             | NUT               | 1    |
| 127 | 78MONTANA110-127 | ETIQUETA ( NO DISPONIBLE) | LABEL             | 1    |
| 128 | 78MONTANA110-128 | ASIDERO                   | GRIP              | 1    |
| 129 | 78MONTANA110-129 | SILENTBLOCK               | SILENTBLOCK       | 1    |
| 130 | 78MONTANA110-130 | TORNILLO                  | SCREW             | 1    |
| 131 | 78MONTANA110-131 | EMPUÑADURA                | HANDLE            | 1    |
| 132 | 78MONTANA110-132 | GATILLO ACELERADOR        | TRIGGER           | 1    |
| 133 | 78MONTANA110-133 | MUELLE GATILLO            | SPRING            | 1    |
| 134 | 78MONTANA110-134 | PASADOR GATILLO           | PIN               | 1    |
| 135 | 78MONTANA110-135 | TAPON TUERCA              | PLUG NUT          | 1    |
| 136 | 78MONTANA110-136 | FIJADOR GATILLO           | TRIGGER FIXER     | 1    |
| 137 | 78MONTANA110-137 | TAPA EMPUÑADURA           | HANDLE COVER      | 1    |
| 138 | 78MONTANA110-138 | TORNILLO                  | SCREW             | 1    |
| 139 | 78MONTANA110-139 | SILENTBLOCK               | SILENTBLOCK       | 1    |
| 140 | 78MONTANA110-140 | TORNILLO                  | SCREW             | 1    |
| 141 | 78MONTANA110-141 | TAPON TORNILLO            | SCREW PLUG        | 1    |
| 142 | 78MONTANA110-142 | COLGADOR                  | HANGER            | 1    |
| 143 | 78MONTANA110-143 | TORNILLO                  | SCREW             | 1    |
| 144 | 78MONTANA110-144 | JUNTA                     | GASKET            | 1    |
| 145 | 78MONTANA110-145 | VALVULA                   | VALVE             | 1    |
| 146 | 78MONTANA110-146 | TAPON FOAM                | PLUG              | 1    |
| 147 | 78MONTANA110-147 | PLACA ASIDERO             | GRIP PLATE        | 1    |
| 148 | 71MONTANA110-148 | ESPADA 10"                | BLADE 10"         | 1    |
| 149 | 7103805040       | CADENA 40E                | CHAIN 40          | 1    |
| 150 | 78MONTANA110-150 | FUNDA ESPADA              | BLADE COVER       | 1    |
| 151 | 78MONTANA110-151 | CONECTOR                  | CONNECTOR         | 1    |
| 152 | 78MONTANA110-152 | EMBRAGUE COMPLETO         | THROTTLE COMPLETE | 1    |
| 153 | 78MONTANA110-153 | KIT EMPUÑADURA            | HANDLE KIT        | 1    |
| 154 | 78MONTANA110-154 | KIT TAPA CADENA COMPLETA  | COVER CHAIN KIT   | 1    |
| 155 | 78MONTANA110-155 | ARRANCADOR COMPLETO       | STARTER COMPLETE  | 1    |
| 156 | 78MONTANA110-156 | TORNILLO SOPORTE          | SCREW             | 3    |
| 157 | 78MONTANA110-157 | SOPORTE SILENTBLOCK       | SUPPORT           | 1    |
| 158 | 78MONTANA110-158 | PALOMILLA                 | NUT               | 1    |