



MARCA



MODELO

BEST 510 DPG V15

Categoría producto: DESBROZADOR

Grupo producto: GASOLINA

Cilindrada: 32,6 cc.

Versión: 1.0

Publicación: 06-17

FIGURA 1

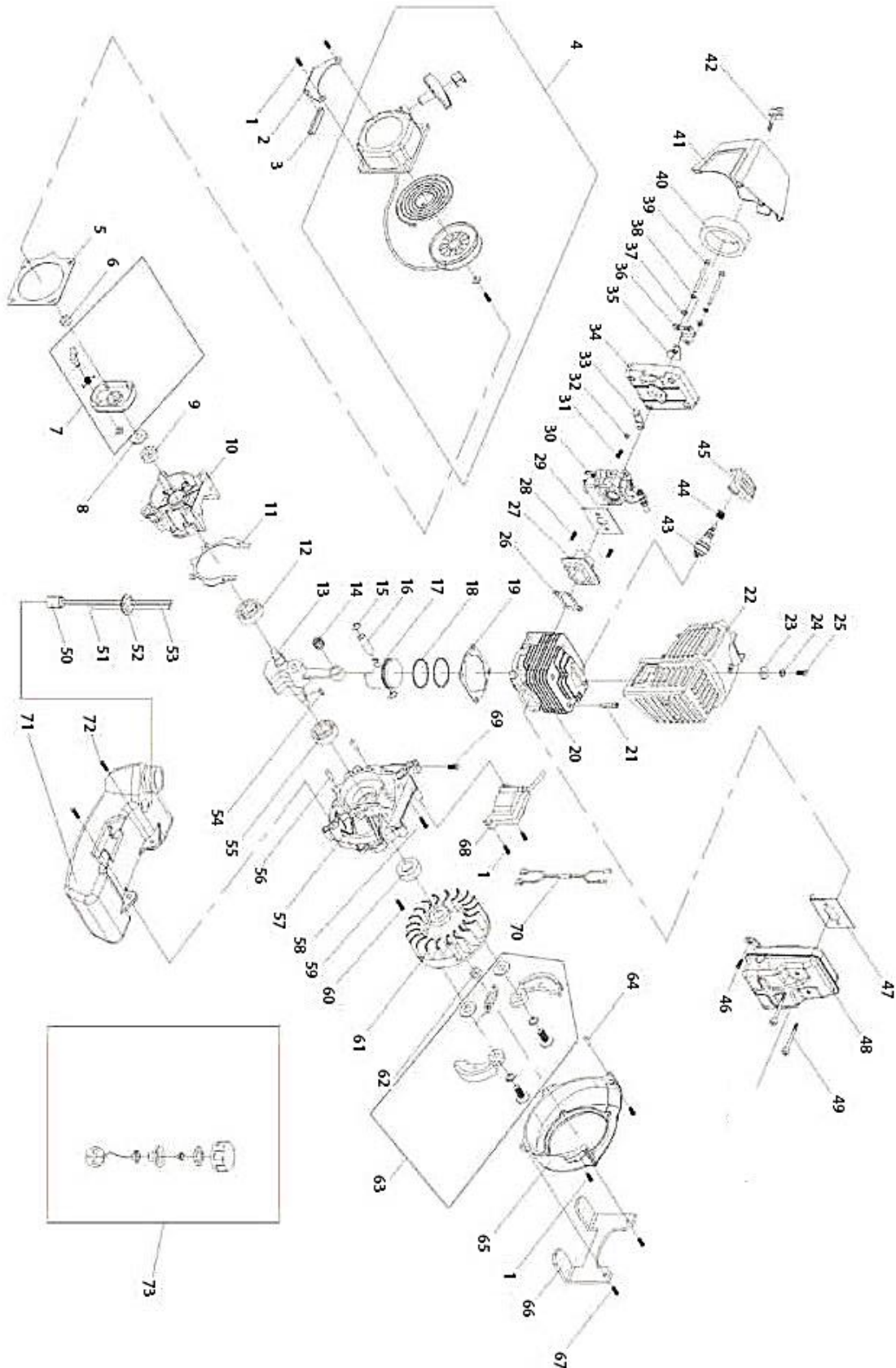


FIG. 1 BEST 510 DPG V15

Nº	Nº Ref.	Descripción	English name	Uds.
1	GBC510-F1-1	TORNILLO M5X20	SCREW M5X20	6
2	GBC510-F1-2	PLACA	PLATE	1
3	GBC510-F1-3	AMORTIGUADOR	DAMPER	1
4	GBC510-F1-4	ARRANCADOR	STARTER COMPLETE	1
5	GBC510-F1-5	JUNTA ARRANCADOR	GASKET	1
6	GBC510-F1-6	TUERCA M8	NUT M8	1
7	GBC510-F1-7	KIT PERRILLOS	PAWL KIT	1
8	GBC510-F1-8	SEPARADOR CAJA PERRILLOS	SPACER	1
9	GBC510-F1-9	RETEN 12X22X7	SEAL 12X22X7	1
10	GBC510-F1-10	SEMI CARTER DERECHO	RIGHT CRANKCASE	1
11	GBC510-F1-11	JUNTA CARTER	GASKET	1
12	GBC510-F1-12	COJINETE BANCADA	BEARING BALL	1
13	GBC510-F1-13	CIGÜEÑAL	CRANKSHAFT	1
14	GBC510-F1-14	COJINETE BULON	BEARING	1
15	GBC510-F1-15	FRENILLO BULON	CIRCLIP	2
16	GBC510-F1-16	BULON	PISTON PIN	1
17	GBC510-F1-17	PISTON	PISTON	1
18	GBC510-F1-18	SEGMENTO	O-RING	2
19	GBC510-F1-19	JUNTA CILINDRO	CYLINDER GASKET	1
20	GBC510-F1-20	CILINDRO	CYLINDER	1
21	GBC510-F1-21	TORNILLO M5x20	SCREW M5X20	1
22	GBC510-F1-22	CARCASA GENERAL	CASING	1
23	GBC510-F1-23	ARANDELA	WASHER	1
24	GBC510-F1-24	ARANDELA	WASHER	1
25	GBC510-F1-25	TORNILLO M5x20	SCREW M5X20	1
26	GBC510-F1-26	JUNTA ADMISION	ADMISSION GASKET	1
27	GBC510-F1-27	CUELLO ADMISION	BOOT INTAKE	1
28	GBC510-F1-28	TORNILLO M5x25	SCREW M5X25	2
29	GBC510-F1-29	JUNTA CARBURADOR	CARBURETOR GASKET	1
30	GBC510-F1-30	CARBURADOR	CARBURETOR	1
31	GBC510-F1-31	TORNILLO	SCREW	1
32	GBC510-F1-32	ARANDELA	WASHER	1
33	GBC510-F1-33	PALANCA AIRE	AIR LEVER	1
34	GBC510-F1-34	CAJA FILTRO	FILTER BOX	1
35	GBC510-F1-35	PALOMILLA AIRE	AIR NUT	1
36	GBC510-F1-36	SOPORTE TAPA FILTRO	FILTER COVER SUPPORT	1
37	GBC510-F1-37	ARANDELA	WASHER	2

FIG. 1 BEST 510 DPG V15

Nº	Nº Ref.	Descripción	English name	Uds.
38	GBC510-F1-38	ARANDELA	WASHER	2
39	GBC510-F1-39	TORNILLO M5x55	SCREW M5X55	2
40	GBC510-F1-40	FILTRO AIRE	AIR FILTER	1
41	GBC510-F1-41	TAPA FILTRO	FILTER COVER	1
42	GBC510-F1-42	PALOMILLA TAPA FILTRO	NUT	1
43	7199240010	BUJIA 2 TIEMPOS	SPARK PLUG 2T	1
44	GBC510-F1-44	CONECTOR BUJIA	CONNECTOR	1
45	GBC510-F1-45	PIPA BUJIA	SPARK PLUG PIPE	1
46	GBC510-F1-46	TORNILLO M5x12	SCREW M5X12	2
47	GBC510-F1-47	JUNTA ESCAPE	MUFFLER GASKET	1
48	GBC510-F1-48	SILENCIADOR ESCAPE	MUFFLER	1
49	GBC510-F1-49	TORNILLO M6x55	SCREW M6X55	2
50	GBC510-F1-50	FILTRO GASOLINA	FUEL FILTER	1
51	GBC510-F1-51	TUBO GASOLINA	FUEL PIPE	1
52	GBC510-F1-52	PASATUBOS	CABLE FIXING CLAMP	1
53	GBC510-F1-53	TUBO REDONDO	TUBE	1
54	GBC510-F1-54	CHAVETA	KEY	1
55	GBC510-F1-55	BULON GUIA	GUIDE BOLT	2
56	GBC510-F1-56	COJINETE BANCADA	BEARING BALL	1
57	GBC510-F1-57	SEMI CARTER IZQUIERDO	LEFT CRANKCASE	1
58	GBC510-F1-58	TORNILLO M5x35	SCREW M5X35	1
59	GBC510-F1-59	RETEN 15x30x7	SEAL 15X30X7	1
60	GBC510-F1-60	TORNILLO M5X35	SCREW M5X35	1
61	GBC510-F1-61	VOLANTE MAGNETICO	FLYWHEEL	1
62	GBC510-F1-62	TUERCA M8	NUT M8	1
63	GBC510-F1-63	EMBRAGUE	CLUTCH	1
64	GBC510-F1-64	BULON GUIA	GUIDE BOLT	1
65	GBC510-F1-65	TAPA VOLANTE	COVER FLYWHEEL	1
66	GBC510-F1-66	SOPORTE DEPOSITO	TANK SUPPORT	1
67	GBC510-F1-67	TORNILLO M5x35	SCREW M5X35	2
68	GBC510-F1-68	ELECTRONICO	IGNITION	1
69	GBC510-F1-69	TORNILLO M5x12	SCREW M5X12	1
70	GBC510-F1-70	CABLE	WIRE	1
71	GBC510-F1-71	DEPOSITO	TANK	1
72	GBC510-F1-72	TORNILLO M5x16	SCREW M5X16	2
73	GBC510-F1-73	TAPON GASOLINA COMPLETO	FUEL CAP ASSEMBLY	1

FIGURA 2

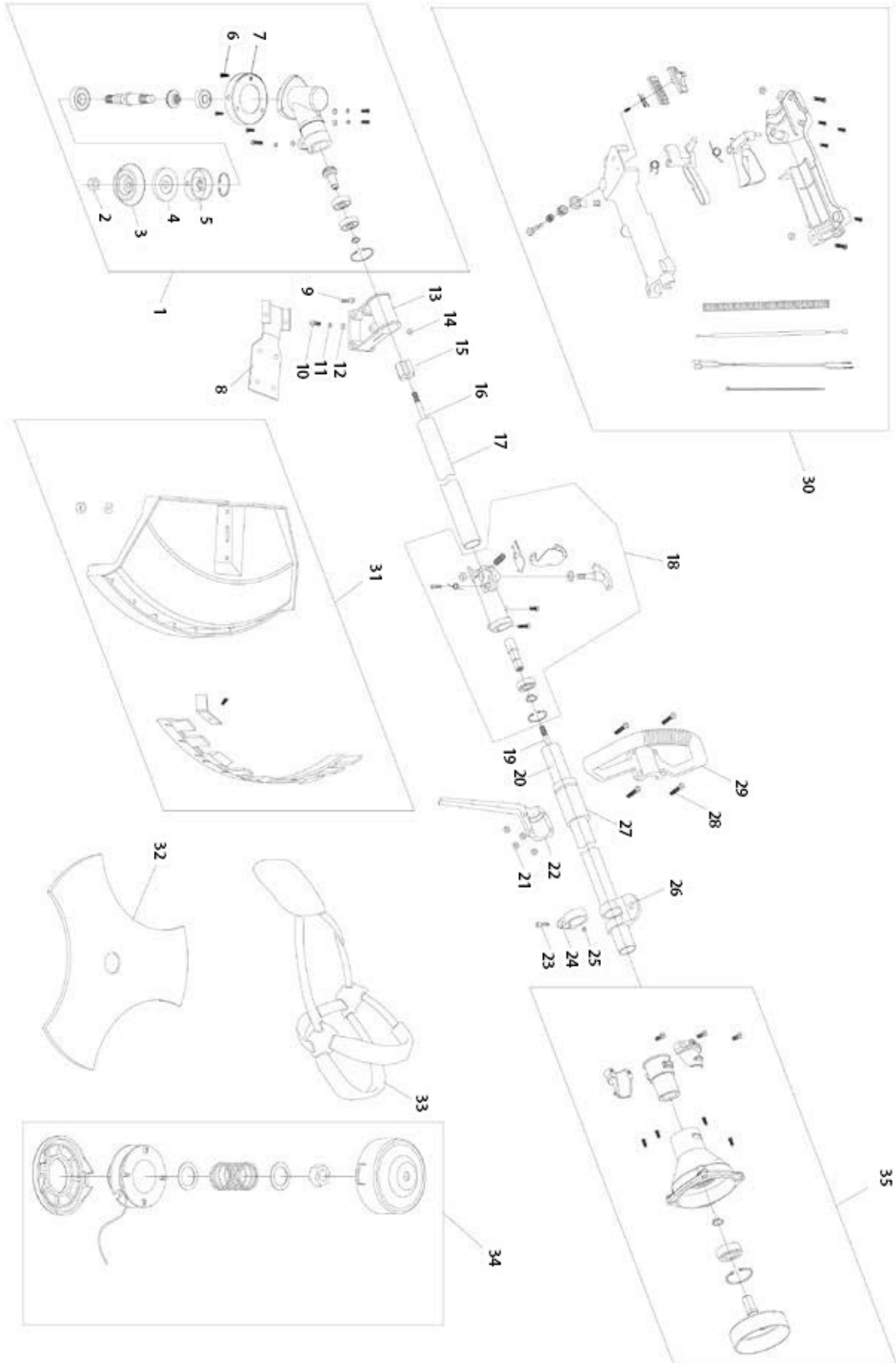


FIG. 2 BEST 510 DPG V15

Nº	Nº Ref.	Descripción	English name	Uds.
1	GBC510-F2-1	KIT CABEZAL ENGRANAJES	GEARS HEAD ASSY	1
2	GBC510-F2-2	TUERCA DISCO	NUT	1
3	GBC510-F2-3	CAMPANA PROTECTOR DISCO	PROTECTION COVER	1
4	GBC510-F2-4	PLACA PRESION DISCO	PRESSION PLATE	1
5	GBC510-F2-5	PLACA DISCO	DISC PLATE	1
6	GBC510-F2-6	TORNILLO M5X12	SCREW M5X12	4
7	GBC510-F2-7	PLATO PROTECTOR	GUARD PLATE	1
8	GBC510-F2-8	SOPORTE	SUPPORT	1
9	GBC510-F2-9	TORNILLO M5X20	SCREW M5X20	4
10	GBC510-F2-10	TORNILLO M5X25	SCREW M5X25	4
11	GBC510-F2-11	ARANDELA	WASHER	1
12	GBC510-F2-12	ARANDELA	WASHER	1
13	GBC510-F2-13	SOPORTE PROTECTOR	GUARD SUPPORT	1
14	GBC510-F2-14	TUERCA M5	NUT M5	3
15	GBC510-F2-15	CASQUILLO SILENBLOCK	SLEEVE	6
16	GBC510-F2-16	VARILLA TRANSMISION	ROD TRANSMISSION	1
17	GBC510-F2-17	TUBO TRANSMISION	TUBE	1
18	GBC510-F2-18	KIT CONECTA TUBOS	TUBE CONNECTOR KIT	1
19	GBC510-F2-19	VARILLA TRANSMISION SUPERIOR	UPPER ROD	1
20	GBC510-F2-20	TUBO SUPERIOR	UPPER TUBE	1
21	GBC510-F2-21	TUERCA	NUT	4
22	GBC510-F2-22	BASE ASIDERO	HANDLE BASE	1
23	GBC510-F2-23	TORNILLO M5X20	SCREW M5X20	1
24	GBC510-F2-24	ABRAZADERA ENGANCHE	HOOK CLAMP	1
25	GBC510-F2-25	TUERCA M5	NUT M5	1
26	GBC510-F2-26	ENGANCHE ARNES	HARNESS CLAMP	1
27	GBC510-F2-27	SILENTBLOCK TUBO	TUBE SILENTBLOCK	1
28	GBC510-F2-28	TORNILLO M5X30	SCREW M5X30	4
29	GBC510-F2-29	ASIDERO	HANDLE	1
30	GBC510-F2-30	KIT PUÑO MANDOS	CONTROL KIT	1
31	GBC510-F2-31	KIT PROTECTOR	GUARD KIT	1
32	7100255143	CUCHILLA 3D (255*25,4*1,4)	BLADE 3	1
33	7199000012	ARNES DOBLE	DOUBLE HARNESS	1
34	7199000450	CABEZAL HILO	CUTTER HEAD	1
35	GBC510-F2-84	KIT CARCASA+CAMPANA	CLUTCH DRUM ASSY	1