



MARCA

MODELO



CHOPPER 137 E-V20

Categoría producto: CACHADORA

Grupo producto: ELECTRICO

Potencia: 1.500 W

Versión: 137EV20

Publicación: 10-20

Cod. Máquina: 51-0012

FIGURA 1

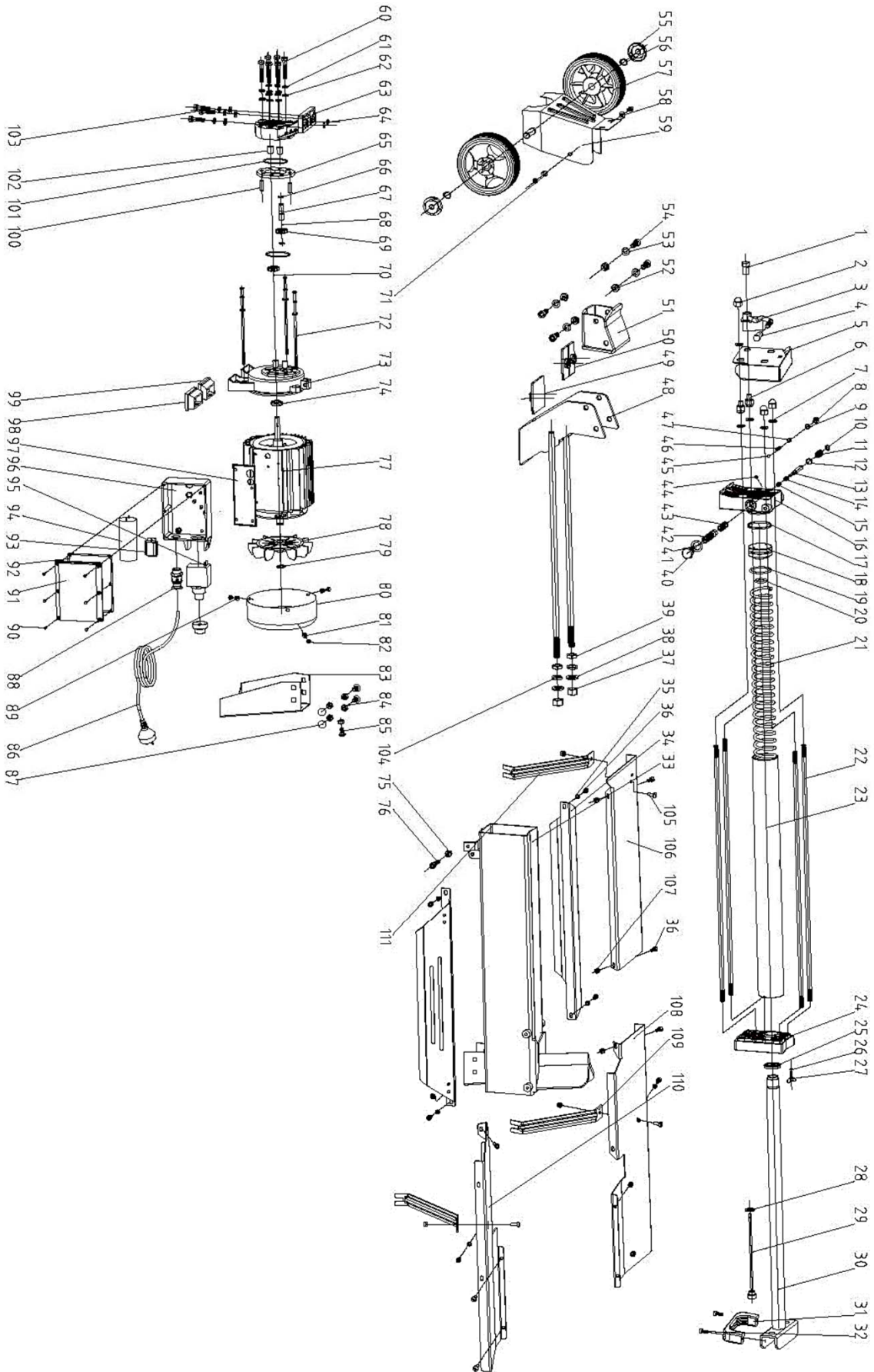


FIGURA 1 - CHOPPER 137 E-V20

Nº	Nº Ref.	Descripción	English name	Uds.
1	65558UK-1	Tuerca	Lever Mount Nut	1
2	65558UK-2	Tuerca M10	Cap Nut M10	3
3	65558UK-3	Palanca	Lever	1
4	65558UK-4	Pomo palanca	Lever Knob	1
5	65558UK-5	Soporte palanca	Guard Plate	1
6	65558UK-6	Tuerca	Customized Nut	2
7	65558UK-7	Junta	Copper Gasket 10	4
8	65558UK-8	Tornillo	Safety Valve Bolt M8	1
9	65558UK-9	Anillo 5.5x2	O-ring 5.5x2	1
10	65558UK-10	Arandela	Snap Washer 6	1
11	65558UK-11	Muelle retroceso	Valve Retract Spring	1
12	65558UK-12	Anillo 6x1.5	O-ring 6x1.5	1
13	65558UK-13	Eje	Valve Core Rod	1
14	65558UK-14	Casquillo	Sliding Sleeve	1
15	65558UK-15	Muelle casquillo	Sliding Sleeve Sping	1
16	65558UK-16	Tapa trasera	Alumium Cover (Rear)	1
17	65558UK-17	Anillo 504.5x2.65	O-ring 50X2.65	1
18	65558UK-18	Pistón	Piston	1
19	65558UK-19	Segmento pistón	Piston Ring 55	1
20	65558UK-20	Anillo 32x3.5	O-ring 32x3.5	1
21	65558UK-21	Muelle	Spring	1
22	65558UK-22	Varilla	Stud Bolt	4
23	65558UK-23	Cilindro hidráulico	Hydraulic Cylinder	1
24	65558UK-24	Tapa delantera	Alumium Cover (Front)	1
25	65558UK-25	Retén 30	Piston Rod Seal 30	1
26	65558UK-26	Anillo 7x1.9	O-ring 7x1.9	1
27	65558UK-27	Perno M5X12	Wing Bolt M5X12	1
28	65558UK-28	Arandela 14	Wahser Groupware 14	1
29	65558UK-29	Varilla ajuste	Dipstick	1
30	65558UK-30	Barra empuje	Piston Rod	1
31	65558UK-31	Asidero elevador	Lift Handle	1
32	65558UK-32	Tornillo M6X16	Screw M6X16	2
33	65558UK-33	Chasis principal	Frame Tube	1
34	65558UK-34	Placa sujeción	Lead plank	2
35	65558UK-35	Arandela muelle 6	Spring Washer 6	6
36	65558UK-36	Tornillo M6x12	Screw M6x12	12
37	65558UK-37	Tuerca	Nut M14	2

FIGURA 1 - CHOPPER 137 E-V20

Nº	Nº Ref.	Descripción	English name	Uds.
38	65558UK-38	Arandela	Flat Wahser 14	2
39	65558UK-39	Tuerca	Hexagon Thin Nut M14	2
40	65558UK-40	Tapón drenaje	Drain Plug	1
41	65558UK-41	Arandela	Washer Groupware 16	1
42	65558UK-42	Casquillo válvula	Valve Sleeve	1
43	65558UK-43	Anillo 10X2	O-ring 10x2	5
44	65558UK-44	Tornillo	Adjusting Screw M5x8	1
45	65558UK-45	Bola acero	Steel Ball 6	1
46	65558UK-46	Muelle válvula	Valve Spring	1
47	65558UK-47	Tornillo	Adjusting Screw M8x8	1
48	65558UK-48	Placa conexión	Log Pusher Connection Weldment	1
49	65558UK-49	Inserto plástico 1	Plastic Insert 1	1
50	65558UK-50	Inserto plástico 2	Plastic Insert 2	1
51	65558UK-51	Empujador	Log Pusher	1
52	65558UK-52	Tuerca	Nut M10	4
53	65558UK-53	Arandela	Flat Wahser 10	5
54	65558UK-54	Tornillo	Screw M10x25	4
55	65558UK-55	Tapa rueda	Wheel Cap	2
56	65558UK-56	Arandela	Shaft Circlip A14	2
57	65558UK-57	Rueda	Wheel	2
58	65558UK-58	Arandela	Washer 6	1
59	65558UK-59	Soporte rueda	Wheel Bracket	1
60	65558UK-60	Tornillo	Bolt M8x55	6
61	65558UK-61	Arandela muelle	Spring Washer 8	9
62	65558UK-62	Arandela	Washer 8	9
63	65558UK-63	Tapa soporte	Gear Pump Cover	1
64	65558UK-64	Anillo 10.6x2.65	O-Ring 10.6x2.65	2
65	65558UK-65	Placa soporte	Gear Housing Plate	1
66	65558UK-66	Frenillo	Circlip 10	2
67	65558UK-67	Eje engranaje	Gear Shaft	1
68	65558UK-68	Bola acero	Steel Ball 2.5	1
69	65558UK-69	Engranaje	Pump Gear	2
70	65558UK-70	Pasador	Pin 2.5x4	1
71	65558UK-71	Arandela	Washer 6	1
72	65558UK-72	Tornillo	Bolt M5x185	3
73	65558UK-73	Tapa motor	Motor Cover	1
74	65558UK-74	Retén FB11x26x7	Seal FB11x26x7	1

FIGURA 1 - CHOPPER 137 E-V20

Nº	Nº Ref.	Descripción	English name	Uds.
75	65558UK-75	Tuerca	Nut M8	1
76	65558UK-76	Tornillo	Screw M8x35	1
77	65558UK-77	Motor	Motor	1
78	65558UK-78	Ventilador	Motor Fan	1
79	65558UK-79	Frenillo	Shaft Circlip A17	1
80	65558UK-80	Cubierta ventilador	Motor Cover	1
81	65558UK-81	Arandela muelle	Spring Washer 5	6
82	65558UK-82	Tornillo	Screw M5X10	3
83	65558UK-83	Pata sujeción	Leg	1
84	65558UK-84	Tuerca	Nut M8	5
85	65558UK-85	Tornillo	Bolt M8x12	3
86	65558UK-86	Cable + clavija	Cable + plug	1
87	65558UK-87	Tornillo	Bolt M8x16	2
88	65558UK-88	Conector cable	Cable Gland	1
89	65558UK-89	Arandela	Washer 5	6
90	65558UK-90	Tornillo	Screw M4X10	11
91	65558UK-91	Tapa interruptor	Switch Box cover	1
92	65558UK-92	Base hermética	Airproof Gasket	1
93	65558UK-93	Terminal conexiones	Connection Terminal	1
94	65558UK-94	Condensador	Capacitor	1
95	65558UK-95	Interruptor	Switch	1
96	65558UK-96	Caja interruptor	Switch Box	1
97	65558UK-97	Junta impermeable	Waterproof Gasket	1
98	65558UK-98	Pie soporte izquierdo	Motor Support Left Shoe	1
99	65558UK-99	Pie soporte derecho	Motor Support Right Shoe	1
100	65558UK-100	Pasador	Pin 8X24	2
101	65558UK-101	Anillo 46.2x1.8	O-ring 46.2x1.8	2
102	65558UK-102	Casquillo	Sliding Sleeve	4
103	65558UK-103	Tornillo	Bolt M8x30	3
104	65558UK-104	Arandela muelle	Spring Washer 14	2
105	65558UK-105	Tornillo	Screw M6X12	13
106	65558UK-106	Base inferior	Guard Bottom Plate	1
107	65558UK-107	Tuerca	Locknut M6	17
108	65558UK-108	Bandeja 1	Log Tray 1	1
109	65558UK-109	Soporte apoyo 1	Support Strut 1	2
110	65558UK-110	Bandeja 2	Log Tray 2	1
111	65558UK-111	Soporte apoyo 2	Support Strut 2	1

FIGURA 2

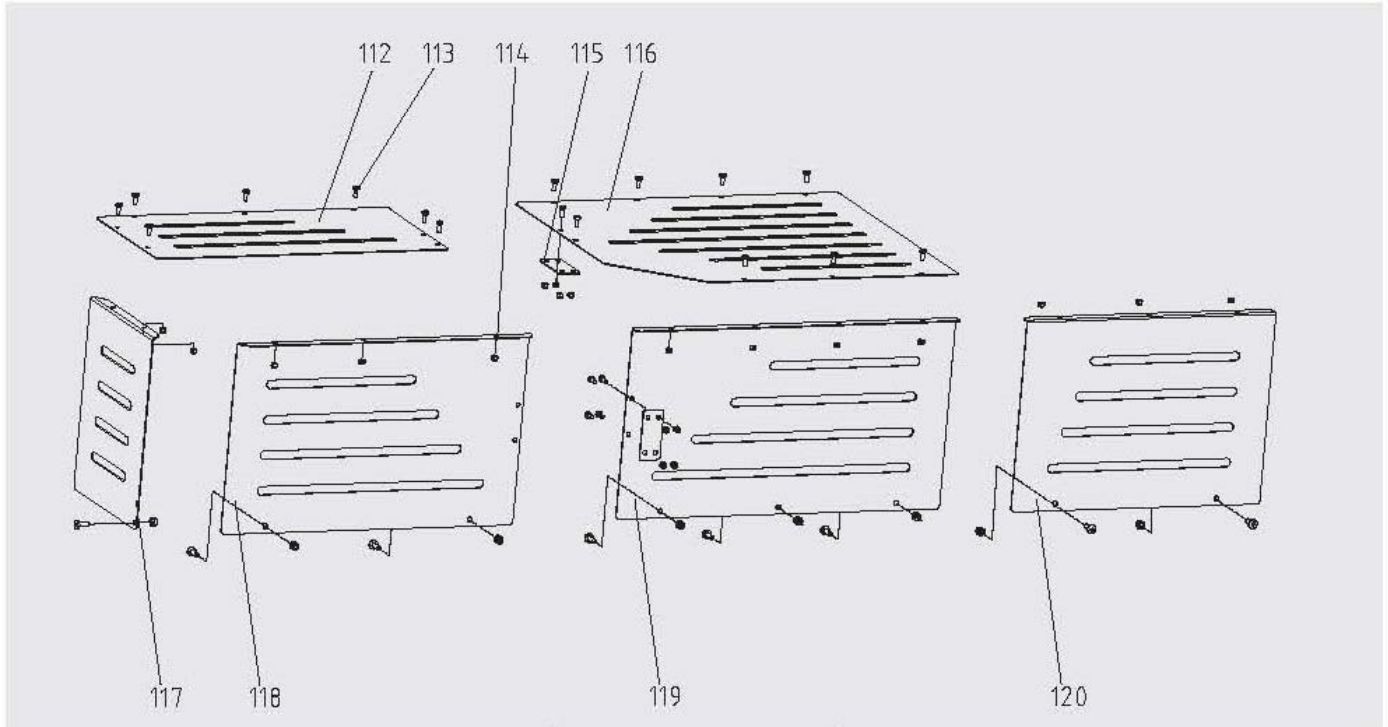


FIGURA 2 - CHOPPER 137 E-V20

Nº	Nº Ref.	Descripción	English name	Uds.
112	65558UK-112	Tapa protección superior 2	Top Guard Plate 2	1
113	65558UK-113	Tomillo	Screw M5x12	20
114	65558UK-114	Tuerca	Locknut M5	19
115	65558UK-115	Placa fijación	Plate connector	20
116	65558UK-116	Tapa protección superior 1	Top Guard Plate 1	19
117	65558UK-117	Placa izquierda	Left Guard Plate	20
118	65558UK-118	Placa trasera 2	Rear Guard Plate 2	19
119	65558UK-119	Placa trasera 1	Rear Guard Plate 1	2
120	65558UK-120	Placa delantera	Front Guard Plate	1