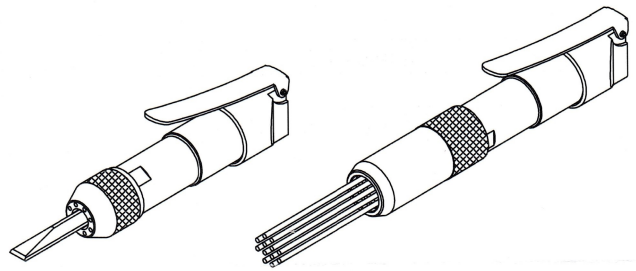
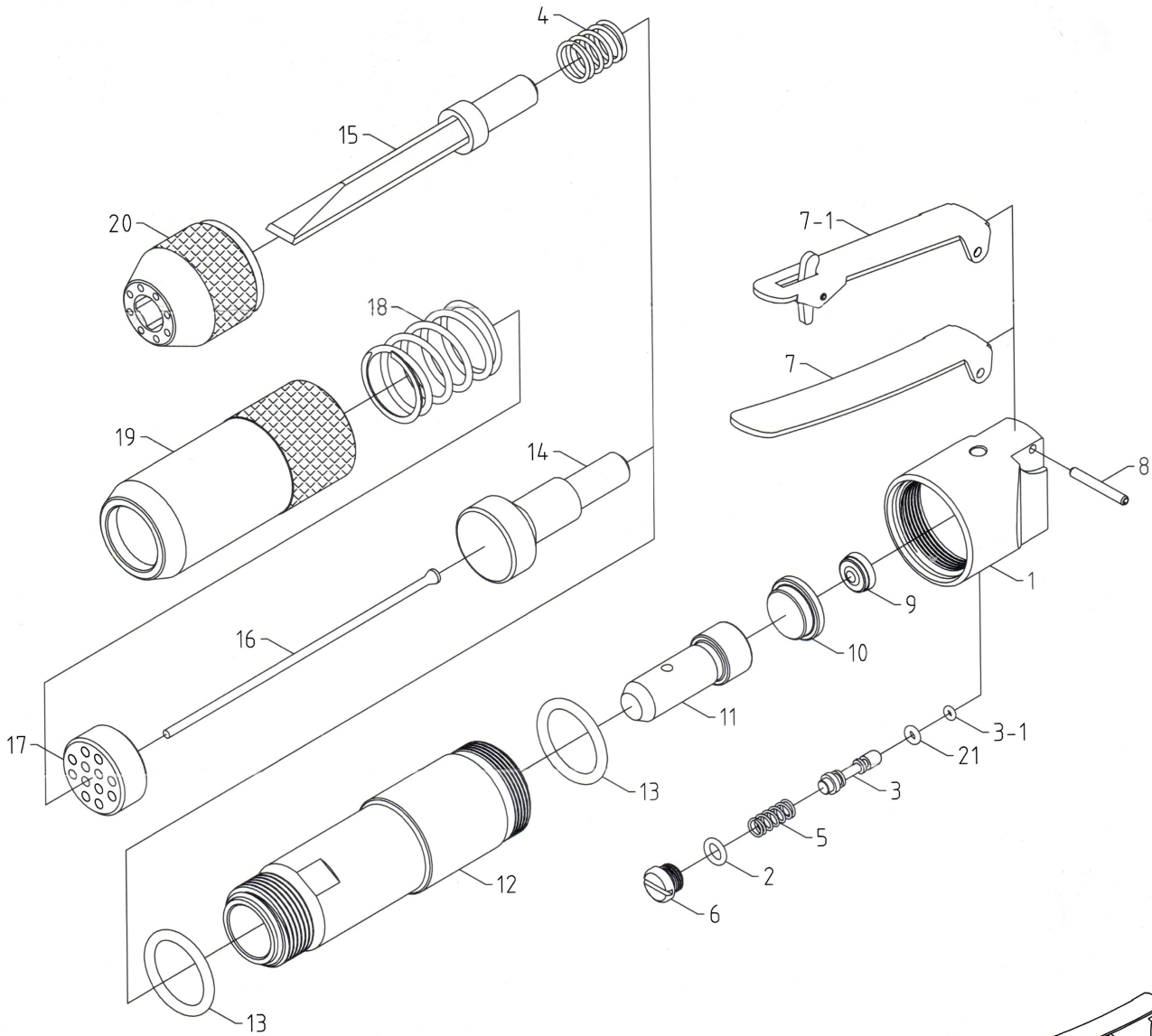


# NEEDLE SCALER / CHISEL SCALER



Specification:		
Model	288NSL / 288NS	288FL / 288F
Blows per minute	5000BPM	4800BPM
Air consumption	1.7CFM	2.0CFM
Air pressure	90PSI	90PSI
Piston diameter	Ø18*47mm	Ø18*47mm
Air inlet	1/4"PT(NPT)	1/4"PT(NPT)
Hose inlet	3/8"	3/8"
Net weight	1.3KG	1.1KG

NO.	PARTS NO.	DESCRIPTION	Q'TY	NO.	PARTS NO.	DESCRIPTION	Q'TY
1	288-01	BACKHEAD	1	11	288-11	PISTON	1
2	288-02	O-RING P6(D5.8*W1.9)	1	12	288-12	CYLINDER	1
3	288-03	VALVE STEM	1	13	288-13	O-RING P24(D23.7*W3.5)	2
3-1	288-03-1	O-RING(D2*W1.5)	1	14	288-14	DRIVER	1
4	288-04	COMPRESSION SPRING	1	15	288-15	CHISEL(FLAT,12MM)	1
5	288-05	VALVE SPRING	1	16	288-16	NEEDLE(Ø3*125L)	12
6	288-06	VALVE CAP	1	17	288-17	NEEDLE HOLDER(Ø3*12HOLES)	1
7	288-07	LEVER	1	18	288-18	COMPRESSION SPRING	1
7-1	288-07A	LOCKING LEVER	1	19	288-19	FRONT TUBE	1
8	288-08	SPRING PIN(Ø3*24L)	1	20	288-20	CHISEL HOLDER	1
9	288-09	BUMPER	1	21	288-21	O-RING P3(D2.8*W1.9)	1
10	288-10	CYLINDER CAP	1				