

Fig.3 ENGINE GROUP

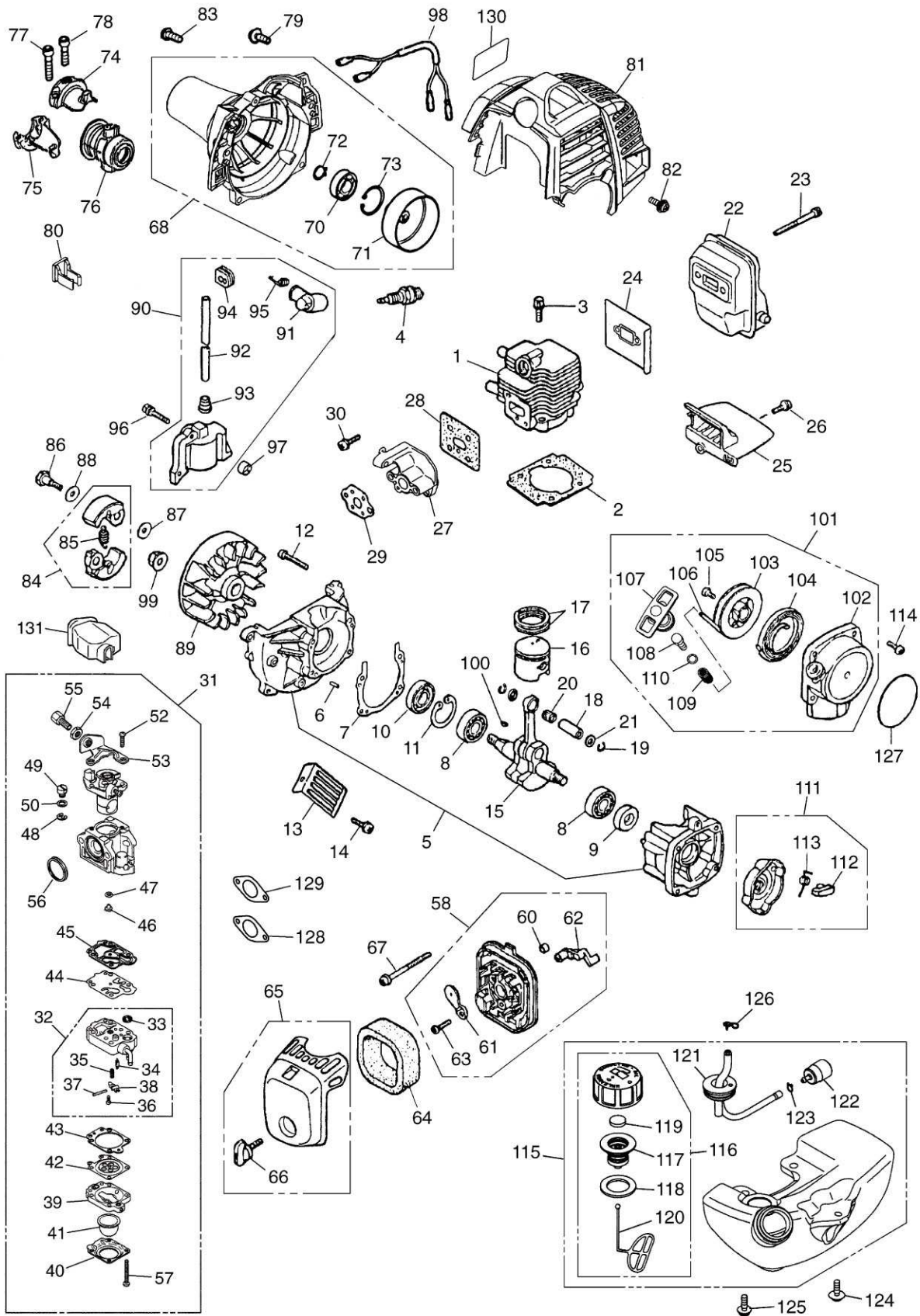


Fig.2

Key#	PART NUMBER	DESCRIPTION	Q'TY /UNIT	NOTE	Key#	PART NUMBER	DESCRIPTION	Q'TY /UNIT	NOTE
1	848B5F5821	PIPE COMP. 1500x24xT1.5	1		57	T3189-15191	• EYELET	2	
2	3520-12213	SHAFT, spline \varnothing 7x7teeth	1	1470x7	58	T3189-15132	• COVER	1	
4	848JC86100	GEARCASE ASSY	1		59	T3189-15142	• CORD HOLDER	1	
5	6440-13122	• GEARCASE	1		60	T3189-15160	• SPRING	1	
6	06000-00626	• BEARING	1		61	T3189-15180	• CORD	1	
7	06000-06000	• BEARING	1		62	8488U00070	TOOL-SET	1	
8	3565-13130	• SEAL	1		63	8488U10040	• SOCKET	1	
9	04065-02612	• SNAPRING	1		64	3540-91120	• SPANNER	1	
10	T3002-13210	• SHAFT	1		65	1030-91340	• DRIVER	1	
11	T3317-13220	• GEAR	1		66	3540-91110	• BAR	1	
12	6440-13242	• HOLDER (A)	1		70	848JL03212	HANDLE COMP.	1	
13	6019-13250	• HOLDER (B)	1		71	848JCH3320	GRIP ASSY	1	
14	T3002-13260	• NUT	1		72	848JL033A3	• BODY-R	1	
15	848JC061D0	• PINION	1		73	848JL033B4	• BODY-L	1	
16	06000-00609	• BEARING	1		74	848JL033C3	• LEVER	1	
17	06001-00609	• BEARING	1		75	848JL033D2	• SPRING	1	
18	T3300-13330	• SNAPRING	1		76	848JL033E3	• LEVER-S	1	
19	04065-02412	• RING	1		77	T4506-52110	• SWITCH	1	
20	T4950-53040	• BOLT TORX	1	M5x30	78	8488241600	• SCREW	4	
21	T4950-60800	• BOLT TORX	1	M6x8	79	T4960-53010	• SCREW TORX	1	
22	01641-20608	• WASHER	1		80	3320-15310	• NUT	1	
23	T4950-51200	• BOLT TORX	1	M5x12	81	8488P00320	• CABLE COMP.	1	
24	T3300-17202	HANGER COMP.	1		82	8488M10450	• CORD COMP.	2	
25	0263-90520	SCREW	1		83	T3004-14810	• TUBE	1	
26	848JC990R0	PLATE NAME	1						
27	6425-12552	PLATE CAUTION	1						
28	848JL066A4	GUARD	1						
29	848JL06634	GUARD ASSY	1						
30	848JL066B2	• BLADE	1						
31	4820-72150	• BOLT TORX	1	M4x16					
32	3238-13150	• NUT	1	M4					
33	3550-14170	SPACER	1						
34	848JC266C0	BRACKET	1						
35	T4950-63040	BOLT TORX	2	M6x30					
41	3540-13283	COVER (NUT)	1						
42	6251-15910	COVER (BLADE)	1						
43	848J823610	STRAP ASSY	1						
44	6298-E3390	BLADE	1						
46	848JG03230	BRACKET ASSY	1						
47	848JG032B1	• BRACKET	1						
48	3541-14182	• CAP-L	1						
49	848JL132K1	• BRACKET-UP	1						
50	4820-13180	• BOLT	2						
51	T4950-52540	• BOLT	4						
52	T3300-14191	PLATE	2						
53	4050-17110	PROTECTOR	1						
54	3540-93120	BAND	1						
55	T3189-15102	TAP HEAD COMP.	1						
56	T3189-15112	• CASE	1						

Fig.2

