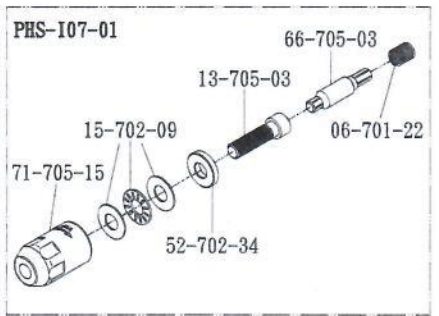
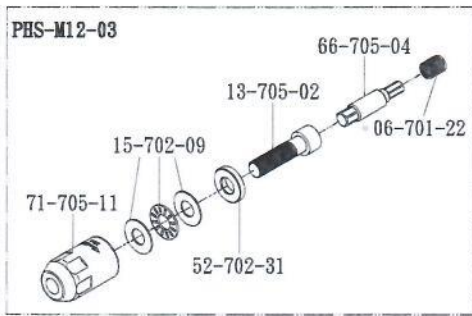
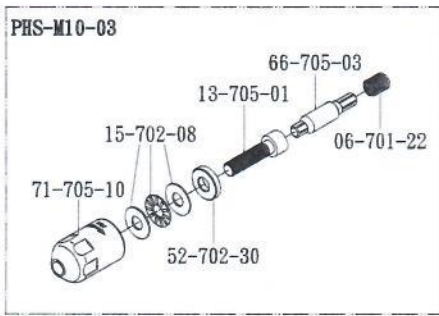
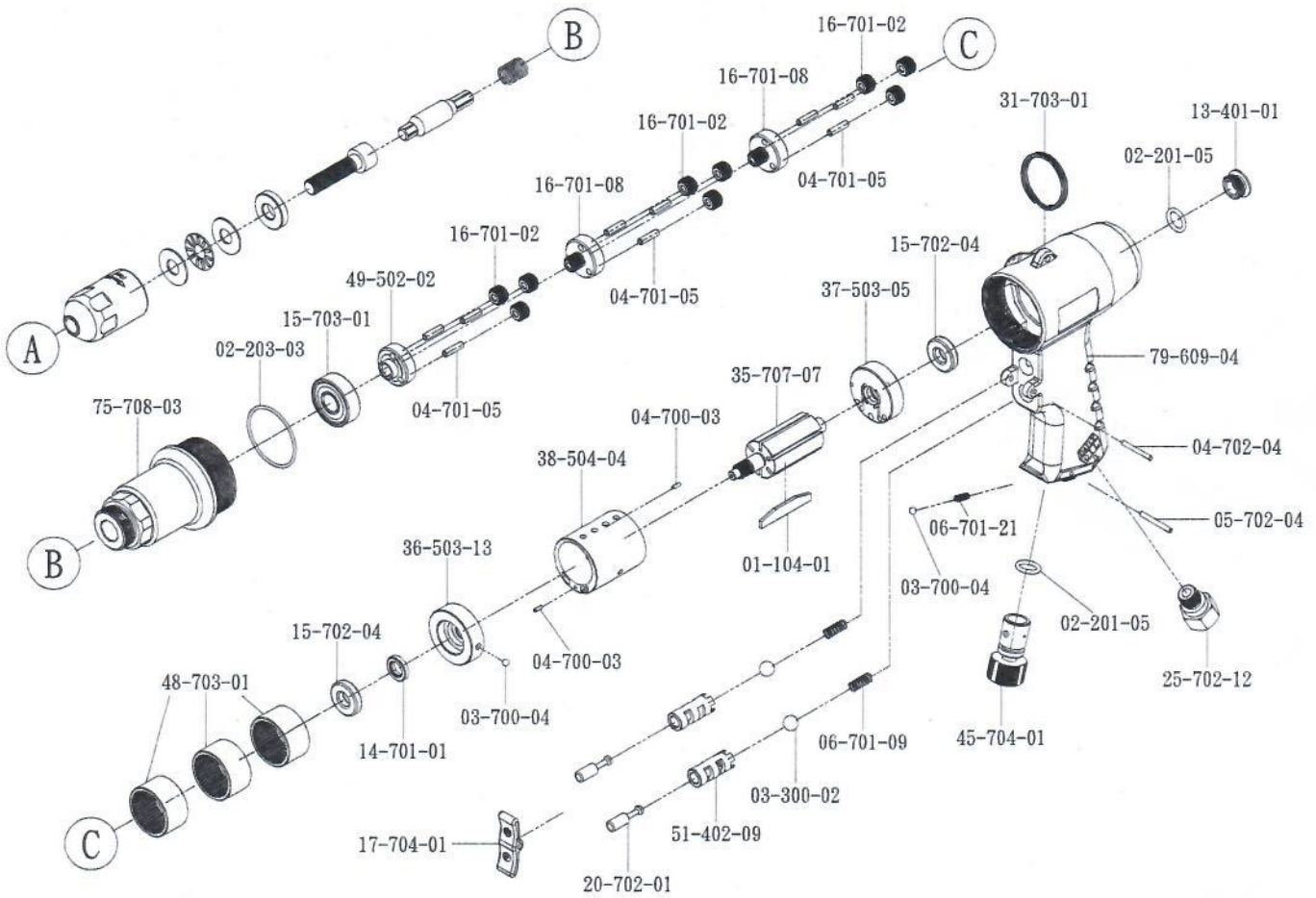


Air Riveting Nut Tool



Part NO.	Description	Q' ty	Part NO.	Description	Q' ty	Part NO.	Description	Q' ty
01-104-01	ROTOR BLADE	6	14-701-01	OIL SEAL	1	38-504-04	CYLINDER	1
02-201-05	O-RING (P11.2)	2	15-702-04	BALL BEARING (R6)	2	45-704-01	SPEED SWITCH	1
02-203-03	O-RING (AS-568-029)	1	15-703-01	BALL BEARING (6201-2Z)	1	48-703-01	GEAR RING	3
03-300-02	PLASTIC BALL(φ 9)	2	16-701-02	GEAR	9	49-502-02	GEAR SEAT	1
03-700-04	STEEL BALL (φ 4mm)	2	16-701-08	GEAR	2	51-402-09	BUSHING	2
04-700-03	PIN (φ 2x6)	2	17-704-01	SWITCH LEVER	1	75-708-03	FRONT CAP	1
04-701-05	PIN (φ 4x15)	9	20-702-01	ROD	2	79-609-04	HANDLE	1
04-702-04	PIN (φ 3x24)	1	25-702-12	AIR INLET (PT)	1	PHS-I07-01	PULL SET 7/16"	1
05-702-04	PIN (φ 3x26)	1	31-703-01	HOOK	1	PHS-M10-03	PULL SET M10	1
06-701-09	SPRING	2	35-707-07	ROTOR	1	PHS-M12-03	PULL SET M12	1
06-701-21	SPRING	1	36-503-13	FRONT PLATE	1			
13-401-01	SCREW	1	37-503-05	REAR PLATE	1			

		Free Speed (rpm)	Overall Length (mm)	Weight (kg)	Air Inlet Size	Air Pressure (psi)
		100	228	1.92	1/4"	90

--If you need to order parts, please mark both Parts NO. and Description.-- 2012/12/21