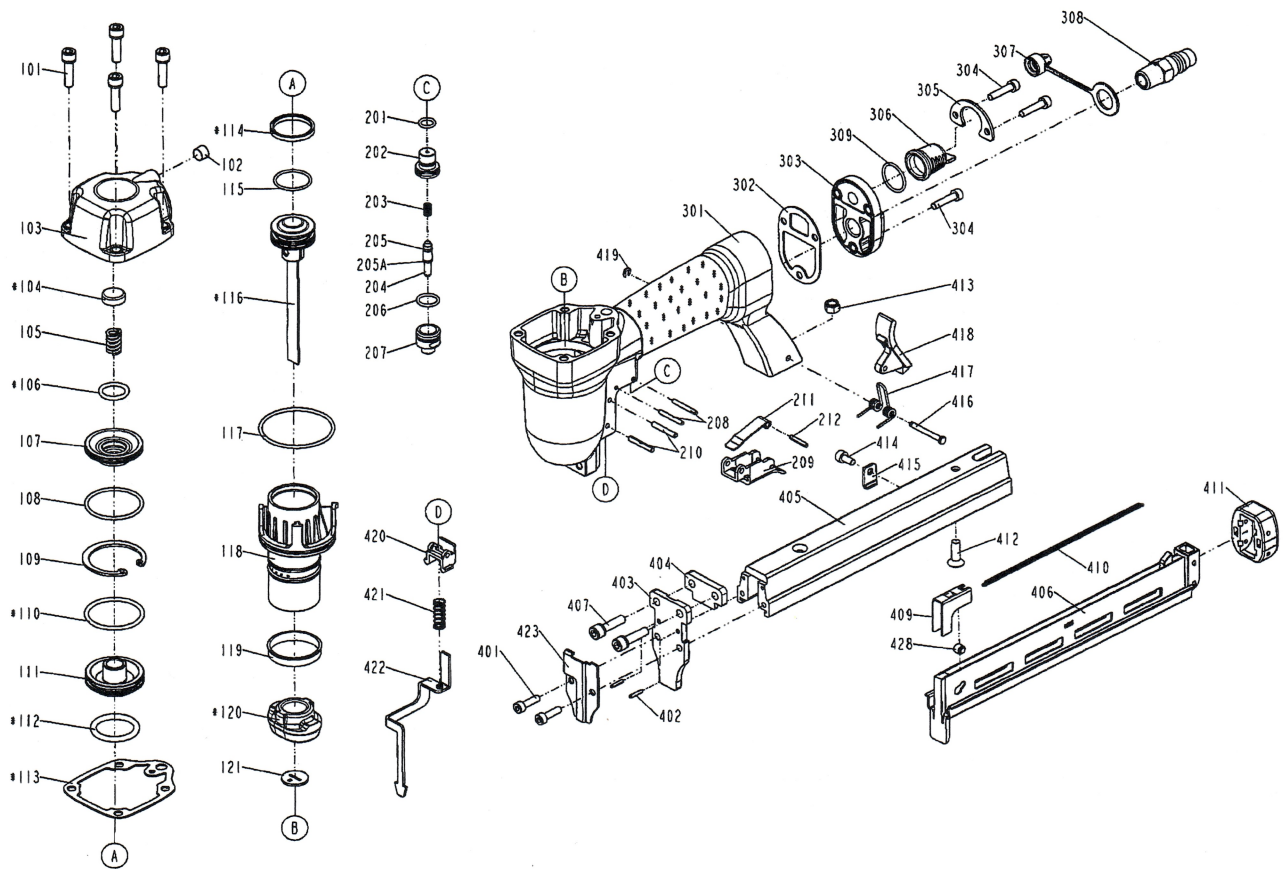


DIAGRAM OF BASSO S92/25-B1



ITEM NO.	PART NO.	DESCRIPTION	ITEM NO.	PART NO.	DESCRIPTION	ITEM NO.	PART NO.	DESCRIPTION
101	201105201A	BOLT ASSY	212	246352	SPRING PIN			
102	2040104-05010-0	HEX.SOC.HD.SCREW	301	11230-0316601-3	GUN BODY UNIT			
103	11369-0310901-2	CAP	302	1132H-0314701-1	GASKET			
104	2001091000	SEAL	303	11346-0314302-1	END CAP			
105	11360-0010001-3	COMPRESSION SPRING	304	20110418C12	HEX.SOC.HD.BOLT			
106	2152011	O - RING	305	11323-0314701-1	BRACKET			
107	11399-0310001-1	COLLAR	306	11394-0314701-1	GUIDE PLATE			
108	3203330000	O - RING	307	2027810047	DUSTY COVER			
109	1131C-0314701-1	RING	308	3601040000	AIR PLUG			
110	2152041	O - RING	309	2041109-02060-0	O - RING			
111	101510901	HD.VALVE PISTON	401	20110414C12	HEX.SOC.HD.BOLT			
112	2041108-03120-0	O - RING	402	246182	SPRING PIN			
113	1132M-0314701-1	PACKING	403	11351-0694701-1	DRIVER GUIDE COVER			
114	100112002	PISTON RING	404	11380-0314701-1	GASKET			
115	3202220000	O - RING	405	11391-0694701-1	MAGAZINE B			
116	11204-0690003-1	DRIVER UNIT	406	11241-0694701-2	DRIVER GUIDE UNIT			
117	2041102-04060-0	O - RING	407	3002190200	BOLT ASSY			
118	11320-0310001-1	CYLINDER	409	11363-0694701-1	PUSHER			
119	100111701	CYLINDER RING	410	2020880J00	PULL SPRING			
120	11327-0314701-3	BUMPER	411	11390-0314701-1	PROTECTING HOOD CVOER			
121	11388-0694701-1	DRIVER GUIDE	412	20710516C12	COUNTER SUNK SCREW			
201	2152035	O - RING	413	2501052	LOCK NUT			
202	11373-0150001-3	TRIGGER VALVE HEAD	414	20110408C12	HEX.SOC.HD.BOLT			
203	100122001	SPRING	415	11305-0314701-1	STOPPER			
204	101520301	PLUNGER	416	2021640A00	LATCH PIN			
205	2152060	O - RING	417	2020770A00	SPRING			
205A	2041102-01031-0	O - RING	418	11343-0314702-2	LATCH			
206	3201260000	O - RING	419	226105	E - RING			
207	101520601	PLUNGER CAP	420	101543201	SAFETY GUIDE			
208	2040400-04100-0	SPRING PIN	421	100720201	SAFETY SPRING			
209	101520801	TRIGGER	422	11330-0314702-1	SAFETY			
210	246212	SPRING PIN	423	11334-0314703-1	RELIEF PLATE			
211	101521501	SECONDARY TRIGGER	428	11324-0690001-2	FIXED PIN			